
Declaration of performance - Zenon Archlight (span 1m - 2.5m)

No. 007HDL2013-09-01 REV1 06/2016

1. Unique identification code of the product-type:

Translucent, longitudinally profiled, pre-curved single or multilayer sheets of UV stabilized polyester resins with glass fibre reinforcement. Self supporting 1m - 2.5m span and unlimited in length

2. Type, batch or serial number or any other element allowing identification of the construction product as required under article 11 (4) of the COP:

Zenon Archlight (span 1m - 2.5m)

3. Intended use or uses of the construction product, in accordance with the applicable harmonised technical specification, as foreseen by the manufacturer:

Providing weather protection and daylight illuminance to any enclosed or partially enclosed agricultural, commercial or industrial building.

4. Name, registered trade name or registered trade mark and contact address of the manufacturer as required under article 11 (5):

Hambleside Danelaw Limited
Long March
Daventry
Northamptonshire
NN11 4NR

5. Where applicable, name and contact address of the authorised representative whose mandate covers the tasks specified in article 12 (2):

Not applicable

6. System or systems of assessment and verification of constancy of performance of the construction products set out in CPR, Annex V:

System 3

7. In case of the declaration of performance concerning a construction product covered by a harmonised standard:

EN 14963

8. In case of the declaration of performance concerning a construction product for which a European Technical Assessment has been issued:

Not Applicable

9. Declared performance:

Hambleside Danelaw 13 EN 14963 Translucent, longitudinally profiled, pre-curved single or multilayer sheets of UV stabilized polyester resins with glass fibre reinforcement. Self-supporting 1m - 2.5m span and unlimited length.		
Essential Characteristics	Performance	Harmonised Technical Specification
Solar Factor Clear sheet Opal sheet Heatstop sheet	NPD NPD NPD	
Luminous transmittance Clear sheet Opal sheet Heatstop sheet	83.6% 58.9% 66.7%	EN 14963
Durability Clear sheet Opal sheet Heatstop sheet	Δ G, Cu 1, Ku 0 Δ G, Cu 2, Ku 2 Δ G, Cu 2, Ku 3	EN 14963
Watertightness	Class 2	EN 12207
Resistance to upward loads Archlight GRP Standard Archlight GRP 1200J Archlight GRP 1200J (French)	UL 3300 UL 4000 UL 6800	EN 14963
Resistance to downward load Archlight GRP Standard Archlight GRP 1200J Archlight GRP 1200J (French)	DL 2800 DL 2800 DL 2800	EN 14963
Impact load soft large body Archlight GRP Standard Archlight GRP 1200J Archlight GRP 1200J (French)	SB 800 SB 1200 SB 1200	EN 14963
Reaction to fire Archlight PRV clear or opal Archlight PRV 1200 Joule Archlight PRV Heatstop	E E E	EN 13501-1
Resistance to fire	NPD	
External fire performance with kit M2 Archlight GRP Standard Archlight GRP 1200J Archlight GRP 1200J (French)	Class B _{roof} (t1) Class B _{roof} (t1) Class B _{roof} (t1)	EN 13501-5
Air permeability	Class 2	EN 1026
Thermal resistance	3.0 W/m ² K	EN 14963
Release of dangerous substances	No dangerous substances above the acceptable limits	EN 14963

10. The performance of the product identified in points 1 and 2 is in conformity with the declared performance in point 8. This declaration of performance is issued under the sole responsibility of the manufacturer identified in point 4.

Signed for and on behalf of the manufacturer by:

Robin Hupfield – Commercial Director

16.06.2016

Date of issue



Signature

Product Safety Datasheet

Hambleside Danelaw Limited
Long March
Daventry
Northamptonshire
NN11 4NR

Description

Translucent, longitudinally profiled, pre-curved single or multilayer sheets of UV stabilized polyester resins with glass fibre reinforcement. Self-supporting 1m - 2.5m span and unlimited in length.

Manufactured from translucent glass reinforced UV stable polyester with UV protective coating on the outer weather surface.

Always avoid walking on rooflights at all times.

Handling

Suitable hand protection should be worn when handling GRP sheets to prevent cuts from sharp edges.

Care should be taken when handling the sheets in windy conditions as they may become difficult to handle due to the large surface area and low weight.

It is recommended that sheets are lifted onto roofs by mechanical means. Rooflights may be considered to be fragile until fully and correctly fitted and may be damaged by inconsiderate handling. It is preferable to carry sheets in the vertical position with the long edge horizontal. Long units should never be lifted by the ends only or carried flat/horizontally.

Storage

All rooflights should be stored in clean dry conditions and off the ground.

For Zenon Archlight rooflights, store on the delivery pallets or on suitable bearers spaced no more than 1.5 metres apart and keep all bearers aligned.

To avoid damage, all rooflights should be stored indoors or under cover. If this is not possible, install protective sheeting over the units anchored to the ground to prevent exposure to rain and direct sunlight prior to installation. All rooflights should be protected from direct sunlight prior to installation to avoid heat build-up and exposure to unprotected surfaces.

Installation

Hambleside Danelaw Zenon Archlight rooflights present no hazards to health as they are generally made to measure requiring no cutting and fixed into position with adequate natural ventilation.

If any cutting or drilling should be required by power tools in confined spaces, a build-up of airborne dust could be experienced. The Health and Safety Executive (HSE) have set Workplace Exposure Limits (WELs) for inhalable dust, for details of the limits refer to the latest edition of guidance note EH40, currently the limit for inhalable dust for long term exposure (8 hours TWA reference period) is 10mg/m³.

Should there be a possibility of exceeding the WEL, the use of a dust mask to at least FFP1 is recommended.

Skin contact with GRP dust may in some cases cause minor irritation. The dust should be washed from the skin using soapy water and if irritation persists, medical advice should be sought. This irritation can be avoided by using appropriate protective clothing and/or barrier cream.

Eye contact may cause irritation, if so flush the eye with copious quantities of clean water and seek medical attention. In line with current industry practice, always wear goggles when using powered tools.

Use

Hambleside Danelaw Zenon Archlight GRP rooflights present no hazard in normal use.

Maintenance

It is recommended that rooflights and all associated fixings and seals are inspected every 2 to 3 years. Any loose or insecure fittings should be tightened or replaced as appropriate. To maintain light transmission due to soiling and to prevent any biological growth or contamination that may attack the surface protection, rooflights should be cleaned using a mild detergent in solution and a soft bristle brush; harsh chemicals or abrasive cleaners should not be used to avoid damaging the UV protective surface layer. If the protective layer is damaged it may, in some cases, be repaired with UV inhibiting clear varnish.

Fire

In case of fire, toxic gases may be given off and suitable fire fighting precautions must be taken.

Disposal

Toxicological - Inert, no hazard

Ecological – Inert, no hazard

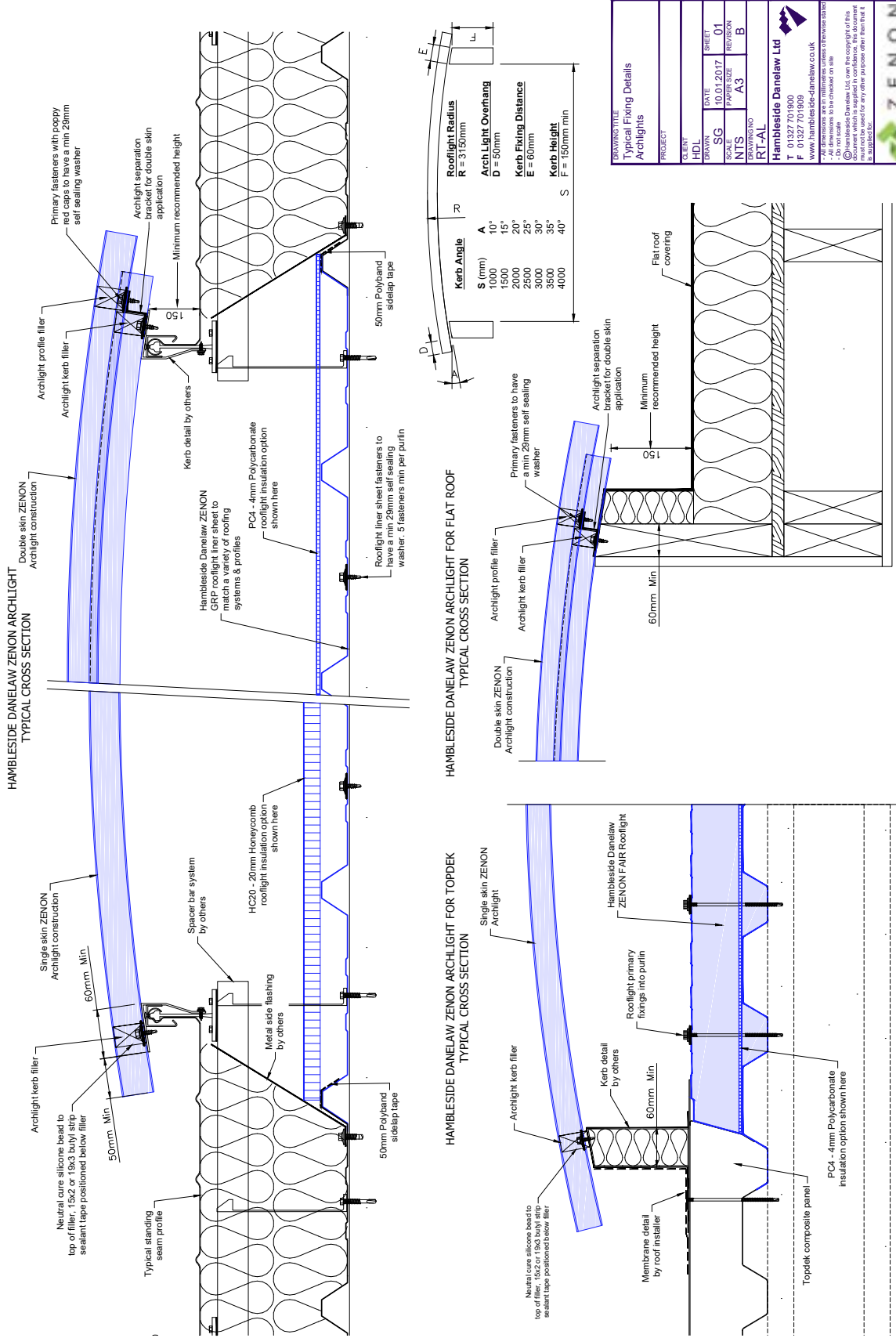
Contact Hambleside Danelaw for the current recommended disposal route.

Contact

Email: techhelp@hambleside-danelaw.co.uk

Website: www.hambleside-danelaw.co.uk

Recommended installation instructions



DRAWING TITLE		PROJECT	
Typical Fixing Details		HDL	
Archlights		DATE	SHEET
		10.01.2017	01
		SCALE	REVISION
		A3	B
		NTS	
		DRAWING NO	
		RT-AL	
Hambleside Danelaw Ltd T 01327 701900 F 01327 701909 www.hambleside-danelaw.co.uk All dimensions to be checked on site. Do not scale. The drawings are the property of HambleSide Danelaw Ltd. The copyright of this document which is assigned in confidence. The document must not be used for any other purpose other than that it is intended for.			