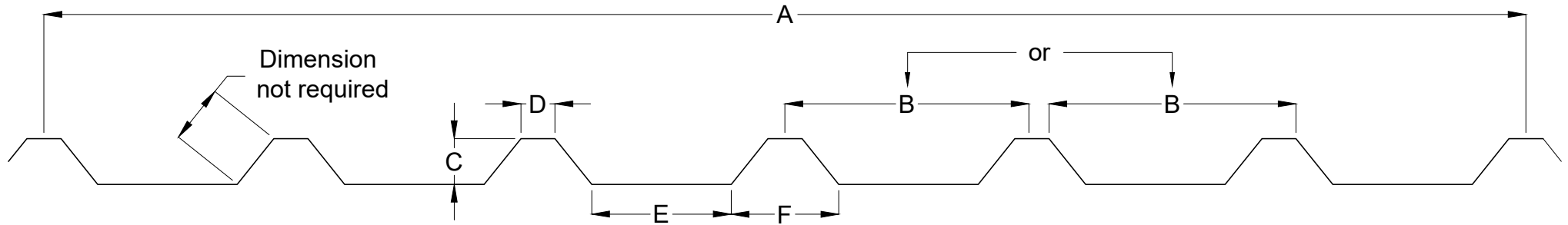


Trapezoidal Profile Identifier for Zenon GRP Rooflights



A Cover Width	B Profile Pitch	C Profile Depth	D Crown Width	E Trough Width	F Base Width

Note: Many profiles have very similar dimensions, therefore they should each be measured as accurately as possible and stated to the nearest millimetre.

Use the following to check dimensions:

$A = B \times \text{number of pitches}$

$B = E + F$

Where roof profiles show a purlin bearing leg, please be advised that these are also available with the purlin bearing leg removed if required.

For sinusoidal profile identification, please contact the Zenon team.