



# INTERLOCKING PLAIN TILE DRY VERGE SYSTEM

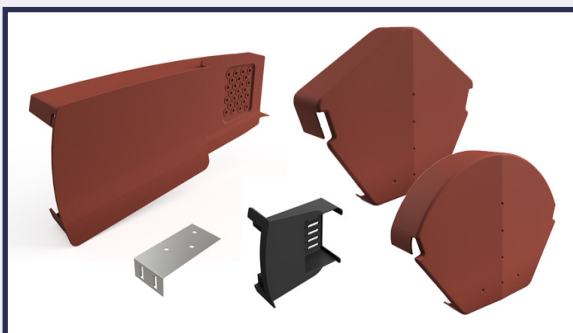
## 15 YEAR GUARANTEE

The Interlocking Plain Tile Dry Verge System has been manufactured to prevent weather ingress and reliance on mortar at the roof edge. Compatible with all interlocking plain tile types and suitable for use on new build or refurbishment.

### FEATURES AND BENEFITS

- Suits all single lap interlocking plain tiles between 170mm and 200mm batten gauges
- Designed to minimise water run-off staining on the verge and gable wall
- Clip-over design for fast installation
- Dry fix products eliminate the mortar installation and maintenance issues
- Secure single nail fixing when used with optional batten end clip. No special fixings required
- Universal eaves starter unit for all applications and one discreet colour
- Starter unit designed to avoid gutter interference and slotted for ease of adjustment
- Starter unit and ridge cap kits include stainless steel screws and wall plugs
- Universal angle and half-round ridge end cap options
- High heat distortion resistance compared to PVC
- UV stabilised for long term performance

### PRODUCT OPTIONS



### MATERIAL

Polypropylene

### PRODUCT CODES AND COLOUR

<b>HD IPTDV</b>	Verge unit	Black, Slate Grey, Dark Brown, Antique Red, Terracotta
<b>HD IPTDV/HR</b>	Half-round ridge end cap	Black, Slate Grey, Dark Brown, Antique Red, Terracotta
<b>HD IPTDV/AR</b>	Angle ridge end cap	Black, Slate Grey, Dark Brown, Antique Red, Terracotta
<b>HD IPTDV/ST</b>	Starter unit	Black only
<b>HD IDV/BC</b>	Batten End Clip	Galvanised

### TECHNICAL INFORMATION

COMPLIES WITH BS 8612

The HD IPTDV dry verge systems provide a fixing for the verge tiles for use in the wind zones 1 to 5 in accordance with BS 8612:2018 Table C.1.

### RELATED PRODUCTS



**CON6+ Dry Fix Ridge & Hip System**  
Includes a ventilated membrane with broad corrugated adhesive strips, patented gaskets, stainless steel straps and fixing screws, code: CON6



**Tile & Slate Breathable Roofing Underlays**  
Available in four weights, two with optional integral lap tapes and widths of 1.0m or 1.5m, codes: DLR120, DLR120TT, DLR135, DLR150, DLR150TT and DLR180



**Individual Soaker - Interlocking Plain Tiles**  
Create a weatherproof joint at abutments, code: HD DTS.  
Also available, the individual soaker for interlocking slates, code: HD RCS



# INTERLOCKING DRY VERGE SYSTEM COMPATIBILITY

Not suitable for double lap tiles and slates

CREST	
DS5	N/A
F8.5	N/A
F12	N/A
F15	N/A
G10	N/A
H10	N/A
H14	N/A
H15	N/A
S9	N/A
SP10	N/A
Double Pantile	IDV
Double Roman	IDV
Planum	IDV
Wolds	N/A

FORTICRETE	
Centurion	N/A
Gemini	IPTDV
Minislate	IPTDV
Senator	IDV
SL8	TIDV
V2	IDV

IMERY'S	
Alpha 10	IDV*
Beauvoise 20	N/A
Double Panne S	N/A
HP10	IDV**
HP17	IDV***
HP20	N/A
Monopole No.1	N/A
Panne H2	N/A
Panne S	N/A

LAGAN	
Double Roll	IDV
Elite	TIDV
Flat	IDV
Square Top	IDV

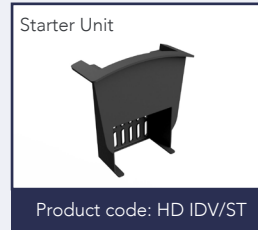
MARLEY ETERNIT	
Anglia Plus	IDV
Ashmore	IPTDV
Duo Modern	IDV
Double Roman	IDV
Edgemere	TIDV
Lincoln	N/A
Ludlow Major	IDV
Ludlow Plus	IDV
Malvern	IDV
Maxima	N/A
Melodie	N/A
Mendip	IDV
Modern	IDV
Wessex	IDV

QUINN	
Devenish	TIDV
Locherne	IDV
Rathmore	TIDV
Western Slate	IDV

REDLAND (MONIER)	
49 Type	N/A
Cambrian	N/A
Cathedral	N/A
Double Roman	IDV
Duo Plain	IPTDV
Fenland	IDV
Grovebury	IDV
Landmark Double Pantile	IDV
Landmark Slate	TIDV
Mini Stonewold	IDV
Norfolk Pantile	IDV
Old Hollow	N/A
Postel	N/A
Regent	IDV
Renown	IDV
Richmond	TIDV
Saxon	TIDV
Stonewold	IDV

RUSSELL	
Argyll	IDV
Bute	TIDV****
Cheviot	IDV
Derwent	IDV
Double Roman	IDV
Galloway	TIDV
Grampian	IDV
Highland	IDV
Lothian	TIDV
Moray	TIDV
Pennine	IDV
Polden	TIDV

SANDTOFT (WIENERBERGER)	
20/20	N/A
Actua	N/A
Arcadia	N/A
Balmoral	N/A
Bridgewater	N/A
Britlock	N/A
Calderdale	IDV
Cassius	TIDV
County	N/A
Double Pantile	IDV
Double Roman	IDV
Flemish	N/A
Gaelic	N/A
Greenwood	N/A
Lindium	IDV
Modula	N/A
Old English	N/A
Old Hollow	N/A
Olympus	IDV
Neo Pantile	IDV
Rivius	TIDV
Shire	IDV
Standard Pattern	IDV
Tempest	N/A
TLE	TIDV
Vauban	N/A



\* Batten gauge 330 to 355mm  
 \*\* Batten gauge 310 to 355mm  
 \*\*\* Batten gauge 260 to 285mm  
 \*\*\*\* Down to 260mm batten gauge