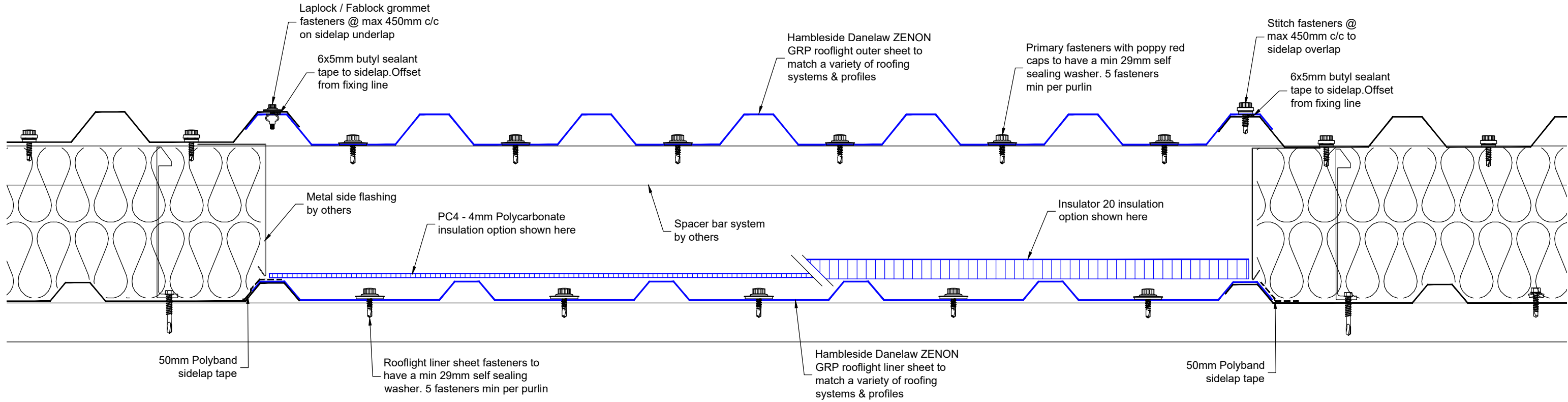
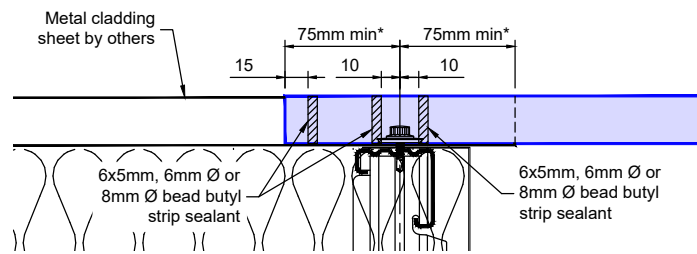


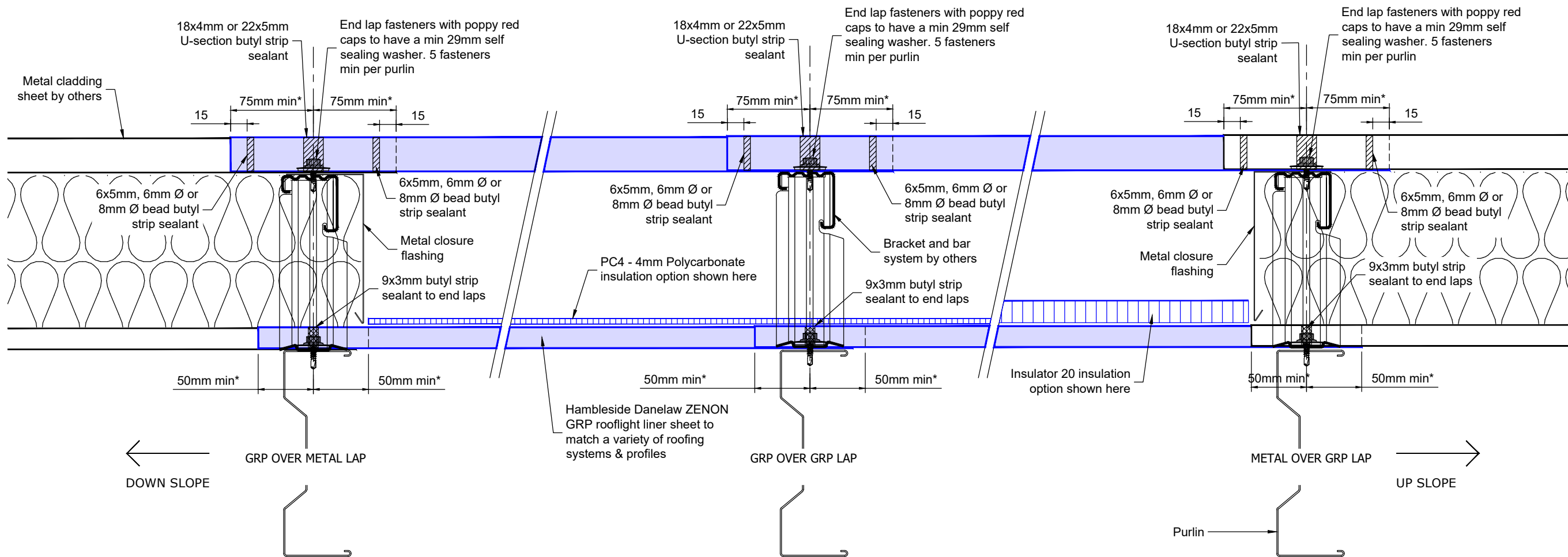
HAMBLESIDE DANELAW SITE ASSEMBLED ROOFLIGHTS
TYPICAL CROSS SECTION



ALTERNATIVE END LAP DETAIL



HAMBLESIDE DANELAW SITE ASSEMBLED ROOFLIGHTS
TYPICAL END LAPS



For further guidance on the sealing of rooflights please refer to MCRMA Technical Paper 16

- * 50mm minimum
- 100mm recommended
- * 75mm minimum
- 100mm recommended

DRAWING TITLE
Typical Fixing Details
Site Assembled Rooflights

PROJECT N/A		
CLIENT HDL		
DRAWN DB	DATE 18.09.2018	SHEET 1 of 1
SCALE 1:4	PAPER SIZE A3	REVISION B
DRAWING NO RT-SAR		
Hambleside Danelaw Ltd T 01327 701900 F 01327 701909 www.hambleside-danelaw.co.uk		
- All dimensions are in millimetres unless otherwise stated - All dimensions to be checked on site - Do not scale © Hambleside Danelaw Ltd, own the copyright of this document which is supplied in confidence, this document must not be used for any other purpose other than that it is supplied for.		
ZENON LOW CARBON DAYLIGHT SOLUTIONS		