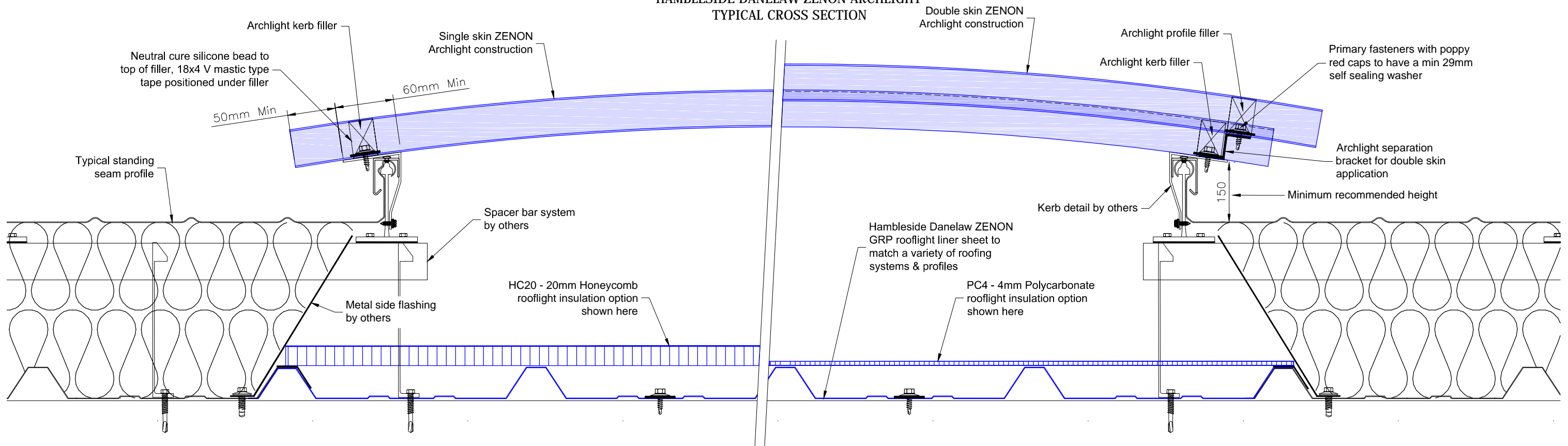
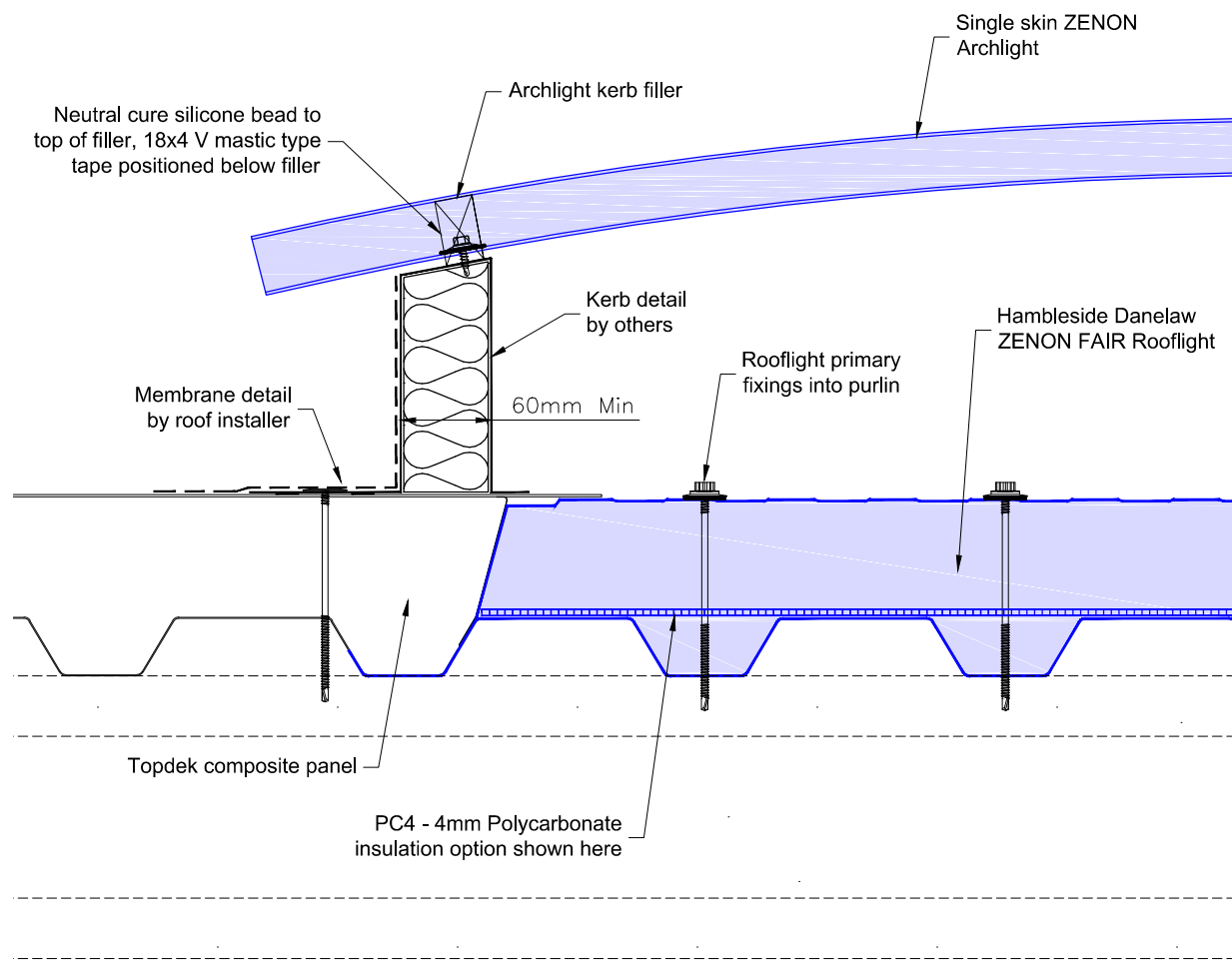


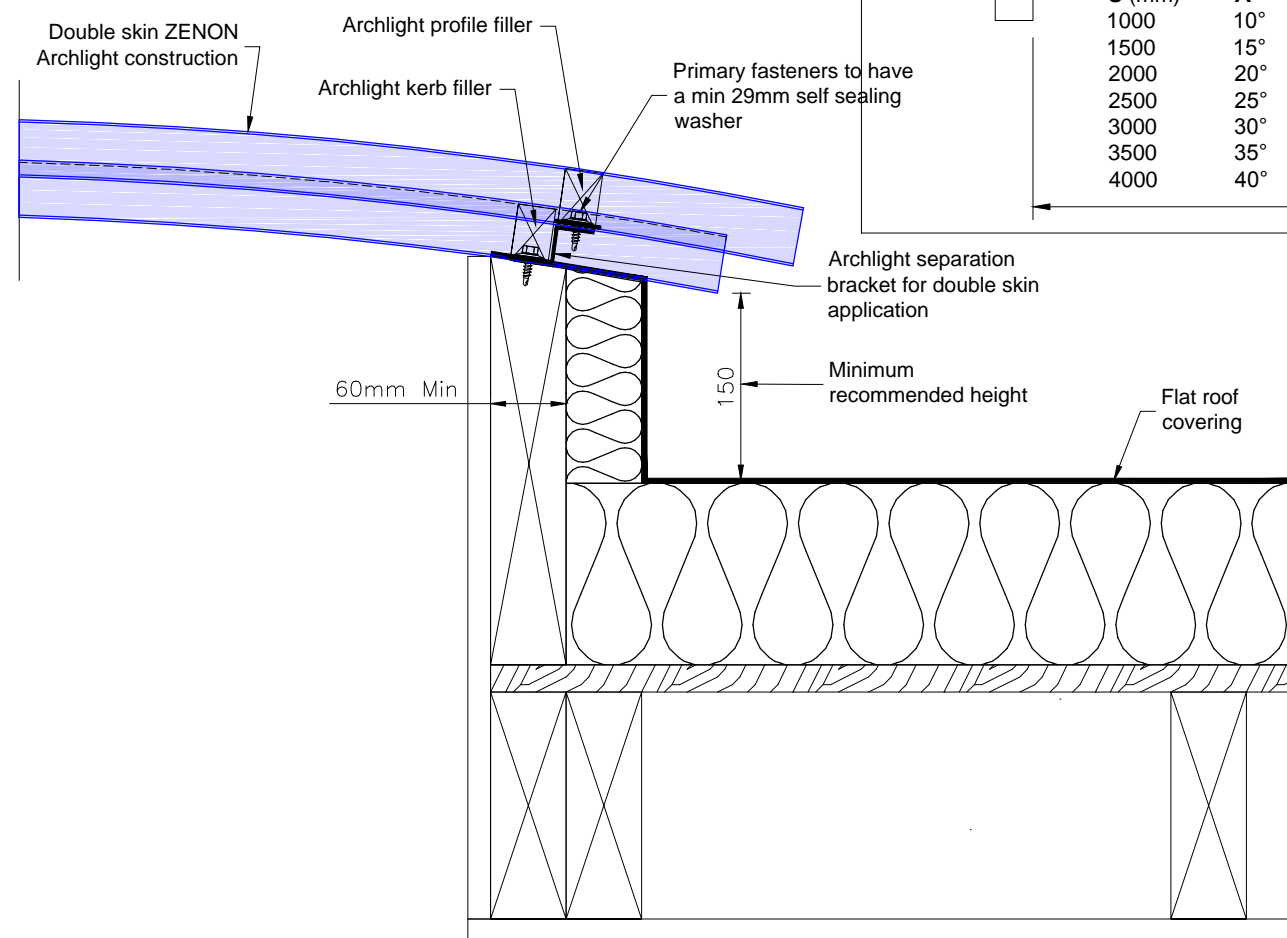
HAMBLESIDE DANELAW ZENON ARCHLIGHT
TYPICAL CROSS SECTION



HAMBLESIDE DANELAW ZENON ARCHLIGHT FOR TOPDEK
TYPICAL CROSS SECTION



HAMBLESIDE DANELAW ZENON ARCHLIGHT FOR FLAT ROOF
TYPICAL CROSS SECTION



Kerb Angle		Rooflight Radius
S (mm)	A	R = 3150mm
1000	10°	Arch Light Overhang D = 50mm
1500	15°	
2000	20°	Kerb Fixing Distance E = 60mm
2500	25°	
3000	30°	Kerb Height F = 150mm min
3500	35°	
4000	40°	

DRAWING TITLE
Typical Fixing Details
Archlights

PROJECT

CLIENT
HDL

DRAWN SG	DATE 17.04.2015	SHEET 01
SCALE NTS	PAPER SIZE A3	REVISION A

DRAWING NO
RT-AL

Hambleside Danelaw Ltd
T 01327 701900
F 01327 701909
www.hambleside-danelaw.co.uk

- All dimensions are in millimetres unless otherwise stated
- All dimensions to be checked on site
- Do not scale

©Hambleside Danelaw Ltd, own the copyright of this document which is supplied in confidence, this document must not be used for any other purpose other than that it is supplied for.