
Declaration of performance - Zenon Arc Evolution

No. **028HDL2015-09-01** REV1 06/2016

1. Unique identification code of the product-type:

Zenon Arc Evolution Insulator 20/20

2. Type, batch or serial number or any other element allowing identification of the construction product as required under article 11 (4) of the COP:

Double skin insulated translucent GRP barrel vault rooflight

3. Intended use:

Continuous rooflight for light transmittance without upstand for use on flat, pitched and curved roofs in line with the roof slope, and along ridge lines of pitched roofs.

4. Name and contact address of the manufacturer:

Hambleside Danelaw Limited
Long March
Daventry
Northamptonshire
NN11 4NR

5. Authorised representative:

Not applicable

6. Assessment and verification of constancy of performance:

System 4

7. Notified body and tasks:

Not applicable

8. Provisions to which the product conforms:

Annex ZA of EN 14963:2006

9. Declared performance:

Harmonised Standard EN 14963:2006	
Reaction to fire	NPD - UK fire ratings declared separately
Water tightness	Pass
Impact resistance	NPD Performance to ACR(M)001 declared separately
Thermal resistance	NPD
Light transmittance	NPD
Solar direct transmittance	NPD
Solar factor (g-value)	NPD
Air permeability	NPD
Durability	NPD

9. The performance of the product identified in points 1 and 2 is in conformity with the declared performance in point 8. This declaration of performance is issued under the sole responsibility of the manufacturer identified in point 4.

Signed for and on behalf of the manufacturer by:

John Godley – Technical Manager

16.06.2016

Date of issue



Signature

Product information sheet

Hambleside Danelaw Limited
Long March
Daventry
Northamptonshire
NN11 4NR

Description

Zenon Arc continuous barrel vault rooflights without upstand for flat and/or inclined roofs CE marked in accordance with EN 14963:2006. Manufactured from translucent glass reinforced UV stable polyester with UV protective layer on the outer weather surface for external use and available with integral insulation options.

All Hambleside Danelaw products are designed and manufactured under our ISO 9001:2008 approved design. They have been tested for fire retardance in accordance with BS476, and are available with external surface fire classifications of S.AA or S.AB to BS476-3, and internal liner classifications of Class 1 or Class 3 to BS476-7 or Class 0 to BS476-6.

Always avoid walking on rooflights at all times.

Handling

Suitable hand protection should be worn when handling GRP panels to prevent cuts from sharp edges.

Care should be taken when handling the panels in windy conditions as they may become difficult to handle due to the large surface area and low weight.

It is recommended that panels are lifted onto roofs by mechanical means. Rooflights may be considered to be fragile until fully and correctly fitted and may be damaged by inconsiderate handling. It is preferable to carry panels in the vertical position with the long edge horizontal. Special and particular care should be taken when handling the panels to avoid causing damage to the assembly and seals. Long units should never be lifted by the ends only or carried flat/horizontally.

Storage

All rooflights panels should be stored in clean dry conditions and off the ground on the delivery pallets or on suitable bearers spaced no more than 1.5 metres apart and keep all bearers aligned. Special care should be taken to avoid crushing or distortion due to excessive loading.

To avoid damage, all rooflight panels should be stored indoors or under cover. If this is not possible, install protective sheeting over the units anchored to the ground to prevent exposure to rain and direct sunlight prior to installation. All rooflights should be protected from direct sunlight prior to installation to avoid heat build-up and UV exposure to unprotected surfaces. The panels should be kept dry prior to installation to avoid any possible water ingress into the units that can cause condensation.

Installation

Hambleside Danelaw light transmitting Zenon Arc GRP rooflights present no hazards to health as they are generally made to measure or to pre-determined lengths requiring no cutting and fixed into position with adequate outdoor natural ventilation.

If any cutting or drilling should be required by power tools in confined spaces, a build-up of airborne dust could be experienced. The Health and Safety Executive (HSE) have set Workplace Exposure Limits (WELs) for inhalable dust, for details of the limits refer to the latest edition of guidance note EH40, currently the limit for inhalable dust for long term exposure (8 hours TWA reference period) is 10mg/m³. Should there be a possibility of exceeding the WEL, the use of a dust mask to at least FFP1 is recommended.

Skin contact with GRP dust may in some cases cause minor irritation. The dust should be washed from the skin using soapy water and if irritation persists, medical advice should be sought. This irritation can be avoided by using appropriate protective clothing and/or barrier cream.

Eye contact with GRP dust may cause irritation, if so flush the eye with copious quantities of clean water and seek medical attention. In line with current industry practice, always wear goggles when using powered tools.

Use

Hambleside Danelaw light transmitting Zenon Arc GRP rooflights present no hazard in normal use.

Maintenance

It is recommended that rooflights and all associated fixings and seals are inspected every 2 to 3 years. Any loose or insecure fittings should be tightened or replaced as appropriate. To maintain light transmission due to soiling and to prevent any biological growth or contamination that may attack the surface protection, rooflights should be cleaned using a mild detergent in solution and a soft bristle brush; harsh chemicals or abrasive cleaners should not be used to avoid damaging the UV protective surface layer. If the protective layer is damaged it may, in some cases, be repaired with UV inhibiting clear varnish, however the long term performance and non-fragile period may be reduced.

Fire

In case of fire, toxic gases may be given off and suitable fire-fighting precautions must be taken.

Disposal

Toxicological - Inert, no hazard

Ecological – Inert, no hazard

Contact Hambleside Danelaw for the current recommended disposal route.

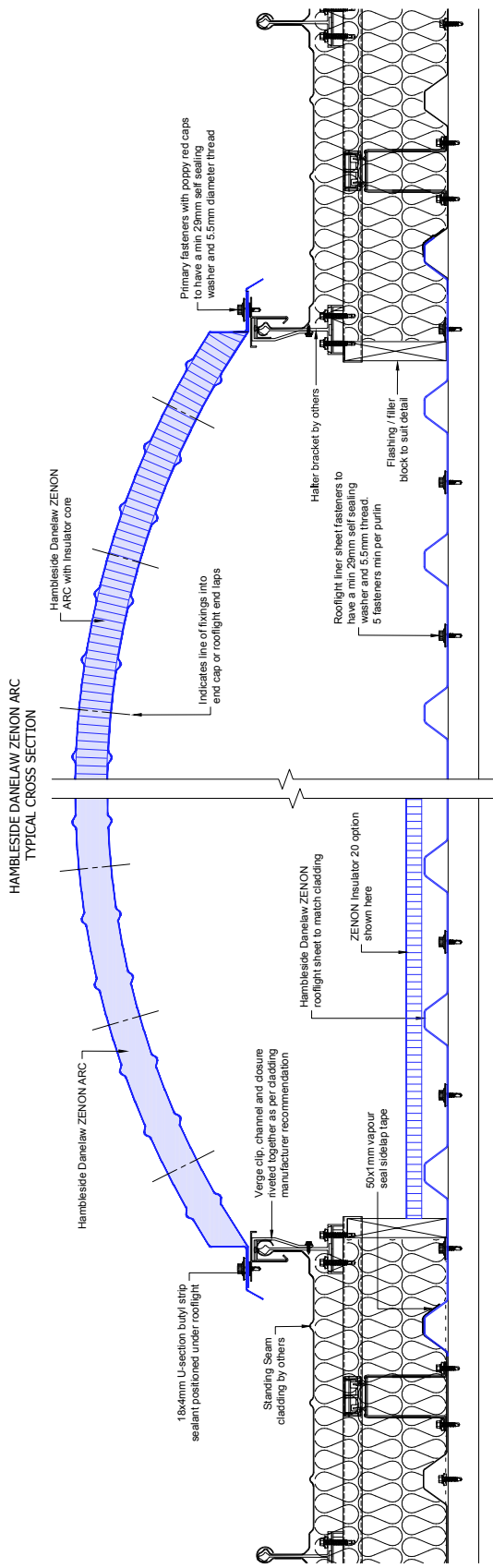
Rooflights and Roof Safety

The Health and Safety Executive clearly state that those persons responsible for the design of a roof structure should consider carefully the potential to eliminate or reduce the hazard if using materials that are of a fragile nature. GRP rooflights provide an effective and long term means of compliance.

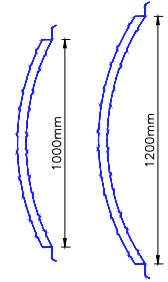
ACR[M]001:2014 (Fifth Edition) Test For Non-Fragility of Profiled Sheeted Roofing Assemblies is a test of the completed roof assembly that defines the test procedure and minimum standard required to demonstrate and achieve non-fragility classification. Further guidance is contained in Technical Document NTD03 produced by the National Association of Rooflight Manufacturers.

Recommended installation instructions

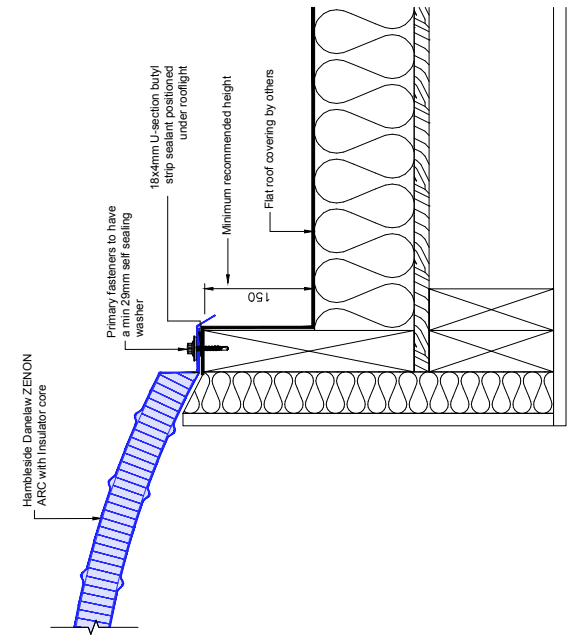
ZENON ARC - TYPICAL CROSS SECTION DETAILS



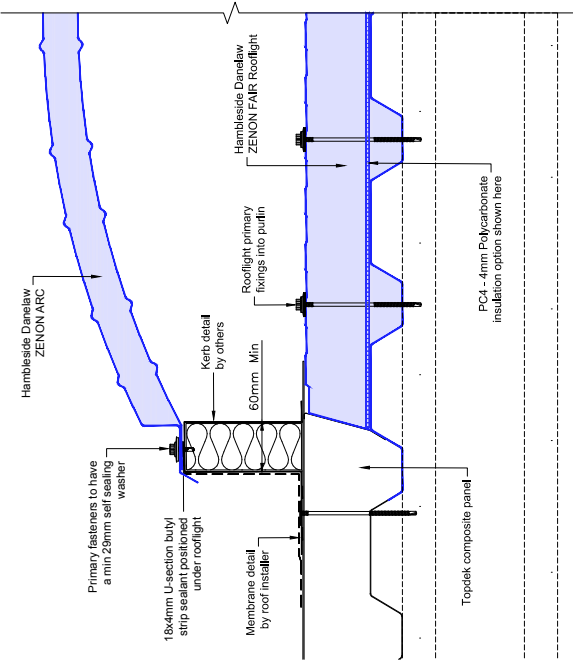
ZENON ARC SIZE OPTIONS



HAMBLESIDE DANELAW ZENON ARC FOR FLAT ROOF TYPICAL CROSS SECTION



HAMBLESIDE DANELAW ZENON ARC FOR TOPDEK TYPICAL CROSS SECTION



PROJECT TITLE	ARC Light Typical Details
PROJECT	NA
CLIENT	HDL
DRAWN	SG
CHECKED	NTS
DATE	06.08.2015
REVISION	01
SCALE	A3
DRAWING NO.	RT-ARC-01
Hamble Side Danelaw Ltd T 01327 701800 F 01327 701809 www.hamble-side-danelaw.co.uk	
All dimensions are in millimetres unless otherwise stated. All dimensions to be checked on site. © Hamble Side Danelaw Ltd. All rights reserved. This document is the property of Hamble Side Danelaw Ltd. It must not be used for any other purpose other than that it is designed for.	



Recommended installation instructions

ZENON ARC - TYPICAL LONG SECTION DETAILS

