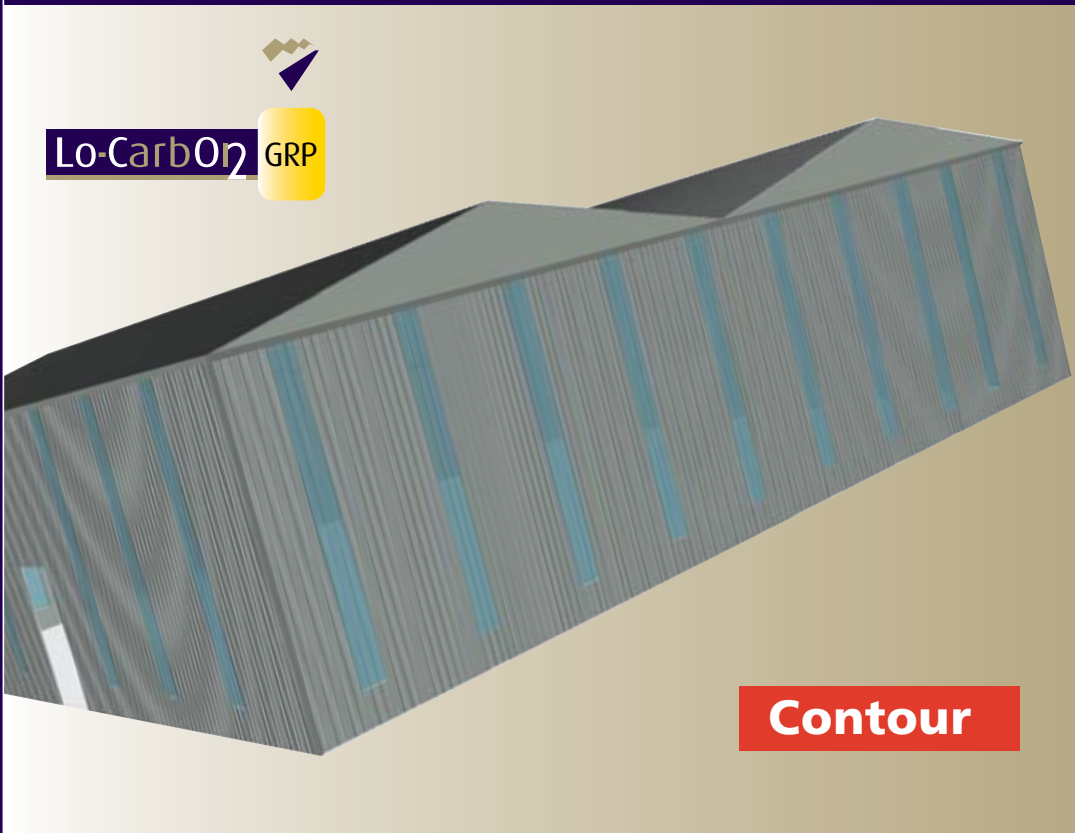


01327 701900
Long March, Daventry, NN11 4NR
www.hambleside-danelaw.co.uk

Hambleside Danelaw Building Products



Insulator
TIMax
Wall Lights

Insulator TIMax WALL LIGHTS



The New Insulator TIMax GRP translucent wall lights

The Hambleside Danelaw GRP Insulator range of daylighting products features a unique insulating core. The importance of this innovation which was developed specifically for rooflight applications was recognised when the product received a Queen's Award for Enterprise : Innovation in 2006. The result of the combination of the traditional with the innovative for providing thermal insulation, took the market by surprise.

U-values which were in excess of $3.3\text{W/m}^2\text{K}$ for GRP rooflights could now be dramatically reduced to as low as $0.8\text{W/m}^2\text{K}$.

This success with Insulator created the stimulus for developing a practical solution to allow natural daylight into a building through the walls (wall lights) and still provide a high level of insulation in the vertical plane.

The new TIMax wall lights are the result of this development and are ideal for use on traditional metal clad buildings.

This product is suitable for:

- Enhancing daylight levels in working areas where traditional glazing is not a cost effective option.
- Increasing levels of natural light where the building design restricts, or is unsuited to, rooflight installation.
- Areas where traditional glazing may be considered a safety hazard - for example: sporting and recreation use.
- Areas where daylight is required but privacy needs to be maintained.
- Use as part of an internal partitioning system, for example within industrial or warehousing areas.

The TIMax™ Core

The TIMax insulating core is constructed from a translucent fibreglass material. This allows the passage of diffused light into the building.

The Insulator TIMax Wall Light

The insulating core is contained within two GRP panels, an exterior weather sheet and an interior liner. They are manufactured in GRP to match most metal profiles. Various options regarding weight and fire retardancy are available to meet most specifications.

Colour Options

The GRP panels can be supplied in either a natural, or coloured tinted translucent finish, the latter being suitable where the nature of the design application calls for attention to aesthetic detail.

Thermal Insulation

TIMax Wall Lights will provide a good level of thermal insulation with U-values in the range of 1.0 to $1.3\text{W/m}^2\text{K}$.

Sustainability

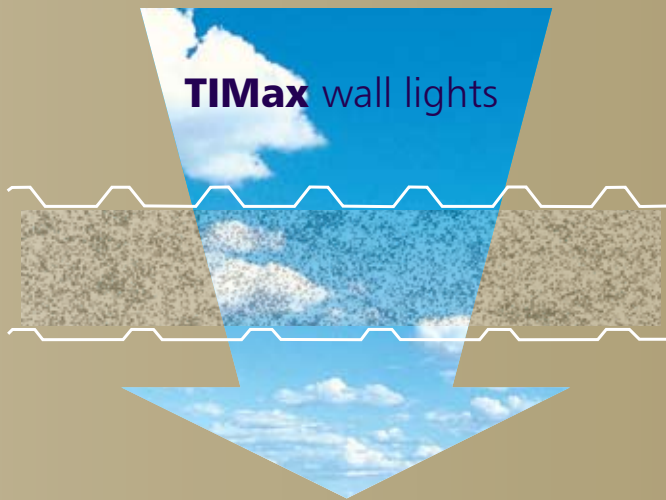
Materials are recyclable at end of service life.



Low Carbon

Working with dcarbon8 and in conjunction with independent consultant engineers, helped with the understanding of the relationship between the raw materials and their impact upon the environment. This resulted in the development of innovative raw material engineering, leading to a new range of low carbon GRP products. These use reinforcement materials which substantially reduce the amount of resin required for manufacture, hence the low embodied carbon.





Technical data: TIMax glass fibre insulant

- Density: depending upon thickness variable between 5kg/m³ to 7.53kg/m³.
- Fire rating: German Class B1.
- Temperature resistance: up to 120°C
- UV stabilised.
- Water absorption: 0.1% at 23°C/50% RH

Technical data GRP

Weather sheets are protected by DuPont® Melinex™ 389, or equivalent, a protective film which is specifically designed to provide high levels of UV resistance making them suitable for use in a northern European environment.

Chemical, Atmospheric and Biological Effects:

- GRP has no known chemical reaction with other materials commonly used in the construction industry.
- Certain acids, alkalis and solutions of water soluble gases may attack GRP.
- GRP is resistant to attack by micro organisms, fungi, larvae, insects and mildew.

- Water Absorption <3% after 24hrs @ 20°C.
- Thermal Movement GRP: Coefficient of linear expansion = $22 \times 10^{-6} \text{ K}^{-1}$
- Operating Temperature: from minus 20°C to plus 100°C. Some discolouration may occur above 65°C.

GRP Fire Rating:

- SAB 3** For external panel applications
- SAA 1** For internal panel applications
- SAA 0** Where specification requires

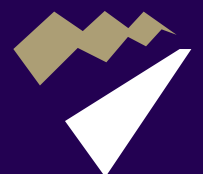
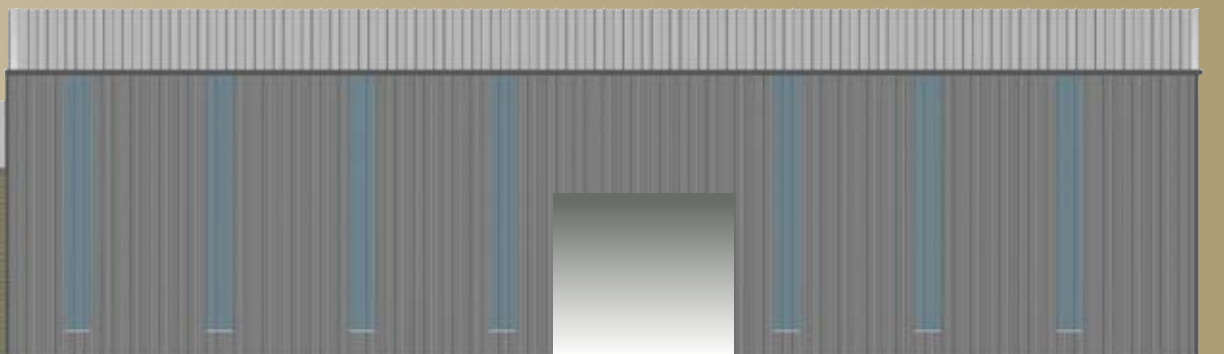
Management Standards:

Hambleside Danelaw is working towards the BES 6001 Environmental and Sustainability Standard and is currently accredited with BS EN ISO 9001:2000 for quality, BS EN ISO 14001:2004 for environment and BS OHSAS 18001:2007 for safety, which exceed the mandatory requirements for BES 6001.



EMS 500154
FM23063
OHS 532271

Insulator
TIMax
Wall Lights



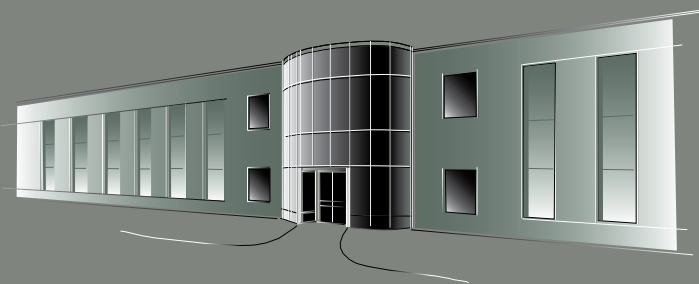
Hambleside Danelaw Building Products

Hambleside Danelaw Limited

Long March
Daventry
Northamptonshire
NN11 4NR

Main switchboard: 01327 701900
General fax: 01327 701909

www.hambleside-danelaw.co.uk
e-mail: marketing@hambleside-danelaw.co.uk



Insulator
TIMax
Wall Lights

